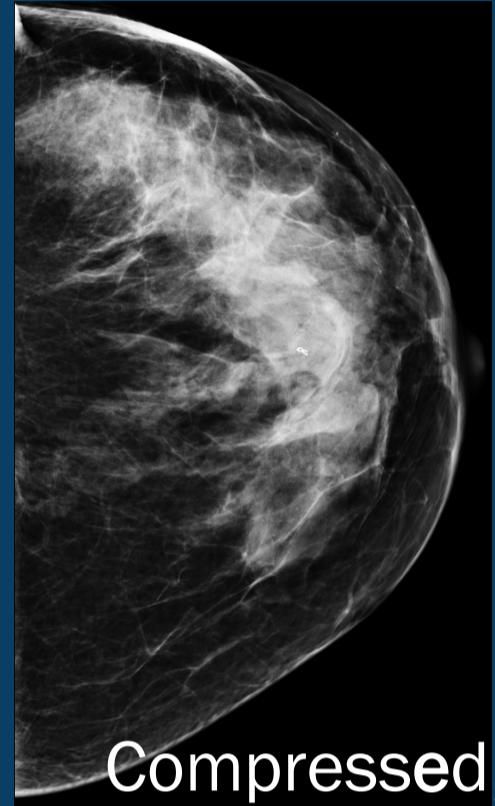


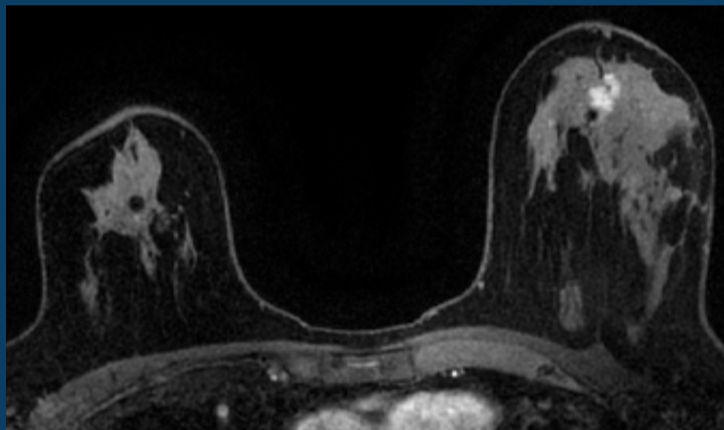
Post biopsy imaging correlation



Supine



Compressed,
standing



Prone

Successful biopsies across modalities

- Correlate carefully
 - Position (clock face, depth, distance from nipple)
 - Account for differences in positioning
 - Size
 - Morphology
 - Surrounding tissue density and landmarks
- Place clip at biopsy for imaging correlation
- Image using original diagnostic modality to verify location of clip or resolution of lesion
- Correlate imaging findings with histology
 - Concordant vs nonconcordant