

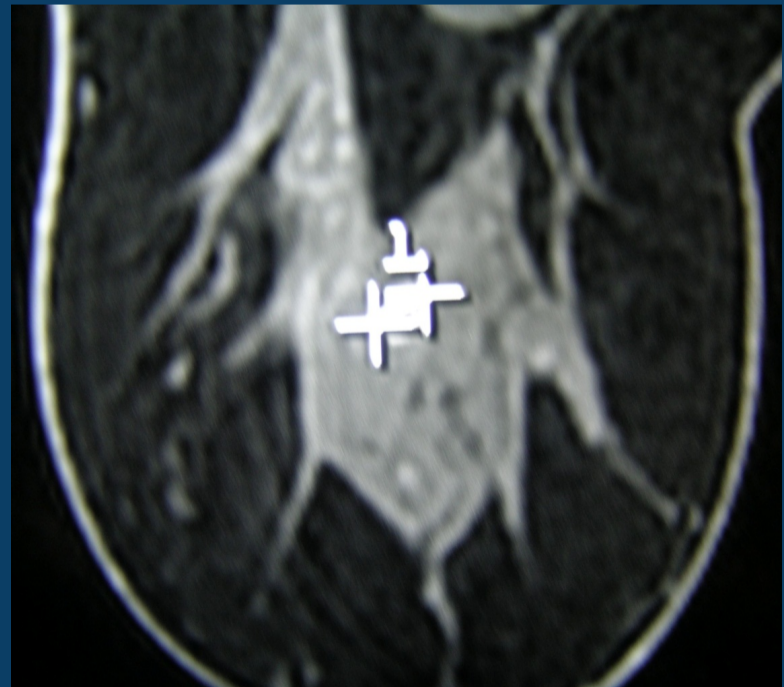
MRI Surveillance: Issues

- Growth of lesions
 - Rad 2009; 252:358-368): BRCA 1,2, high risk: changes average 5.1 mm per year and increased signal
 - Eur Radiol 2014; 24:1176: 170 pts/188 lesions: NO interval cancer detection at 6 month (NYU)
 - Electronic caliber measurement
 - Rad 2013; 269:451; variable CT measurements average 7.5%)
 - Changes in breast appearance during each exam-change in AP diameter and therefore lesion measurement
-

MRI Surveillance: Issues



8 mm, rapid washout YR 2



5 mm , plateau washout, YR 1

IDC

Issue to Address

- Image Quality & Positioning: usually a screening problem
- Triaging: usually a screening/dx issue
- Developing densities: becoming major reason for misdiagnosis
- Communication
- Implementation of MRI