

# Controversies in Ductal Carcinoma in Situ (DCIS)

Wendy DeMartini, M.D.

Section Chief, Breast Imaging

Department of Radiology

University of Wisconsin School of Medicine  
and Public Health



DEPARTMENT OF  
RADIOLOGY  
University of Wisconsin  
School of Medicine and Public Health



# Goals

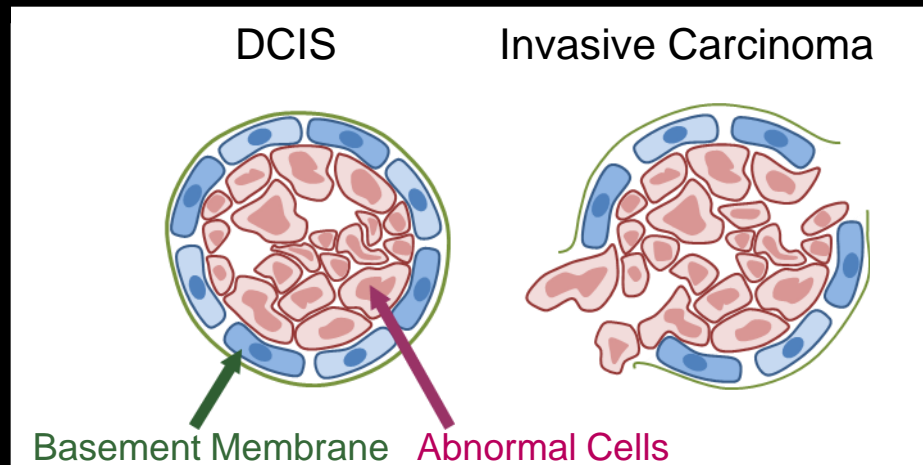
- Describe key challenges and opportunities
- Review current understanding of DCIS
  - Risk of progression
- Focus on strategies to improve patient management
  - Imaging of extent
  - Biomarkers of biological aggressiveness

# Background

- Frequency increased 7-fold with use of mammography
- 28% of new breast cancers (2012)

# Background

- Clonal proliferation of abnormal epithelial cells within the duct, does not invade beyond basement membrane
- Potential precursor to invasive ductal carcinoma



# Current Management

- Surgery
  - 75% wide local excision
    - Additional surgery for margins in 20-30%
  - 25% mastectomy
- Radiation therapy
  - 75% of wide local excision
  - Decreases local recurrence rate
- Adjuvant tamoxifen
  - Decreases breast cancer events

# Risk of Progression

# Improving Management

- U.S. health care priority
  - NIH State-of-the-Science Conference and Statement
  - IOM research priority
- Identify patients who may undergo less therapy

# Imaging Extent of Disease

# Biomarkers of Aggressiveness

Thank you!

