

# Lobular Neoplasia

Michael A. Cohen, MD, FACR

Professor of Radiology

Emory University

## In this workshop we will discuss:

---

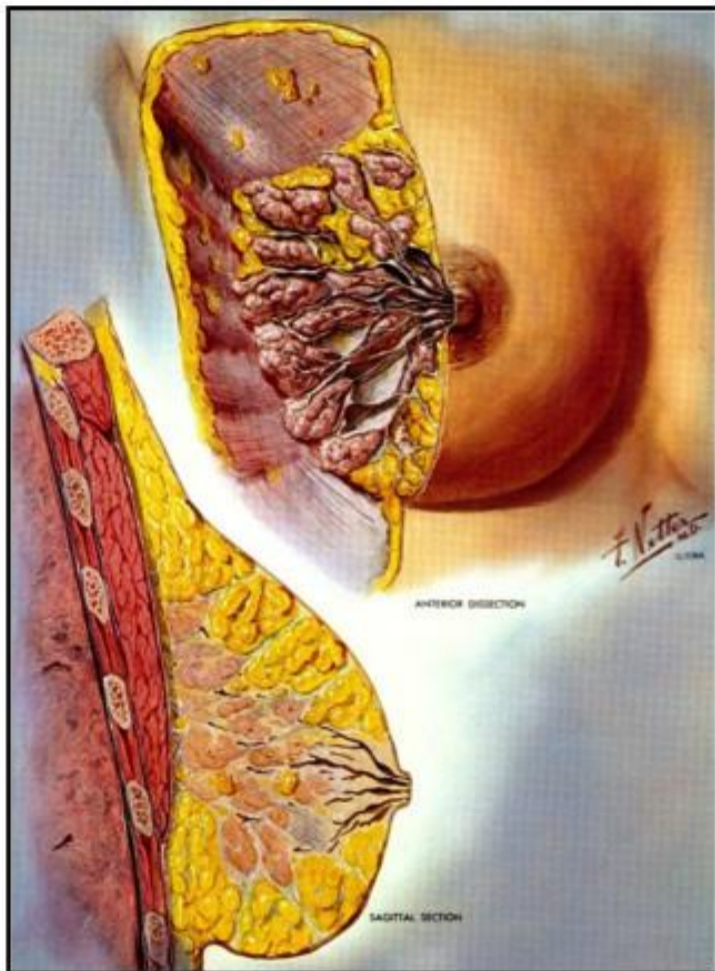
- PATHOLOGY AND DEFINITIONS
  - HISTORIC CHRONOLOGY OF ALH/LCIS AND ITS MANAGEMENT
  - IMAGING FINDINGS IN ALH/LCIS
  - MANAGEMENT OF ALH/LCIS
- 

## EPIDEMIOLOGY OF ALH/LCIS

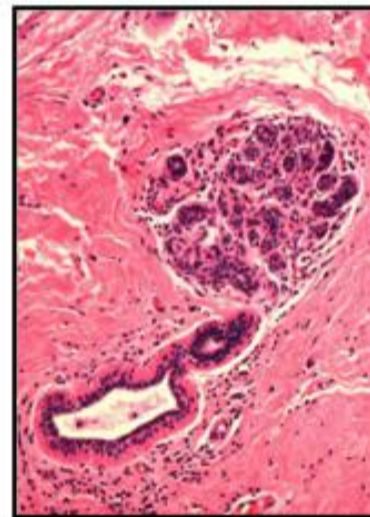
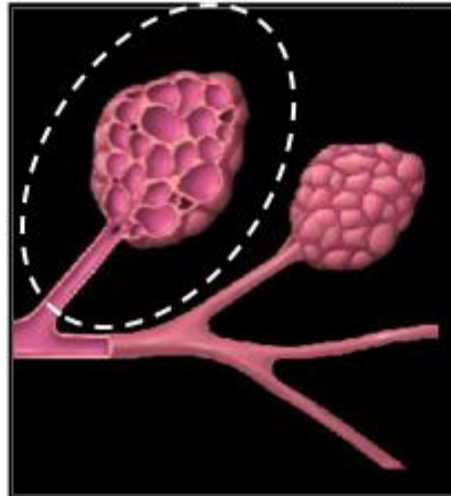
---

- MOST FREQUENTLY DIAGNOSED IN WOMEN AGED 40-50
- INCIDENCE IN OTHERWISE BENIGN BIOPSIES IS BETWEEN 0.5% AND 3.8%

# EPIDEMIOLOGY OF ALH/LCIS



Terminal ductal-lobular unit (TDLU)



# EPIDEMIOLOGY OF ALH/LCIS



# LOBULE WITH MILD ACINAR DILATATION

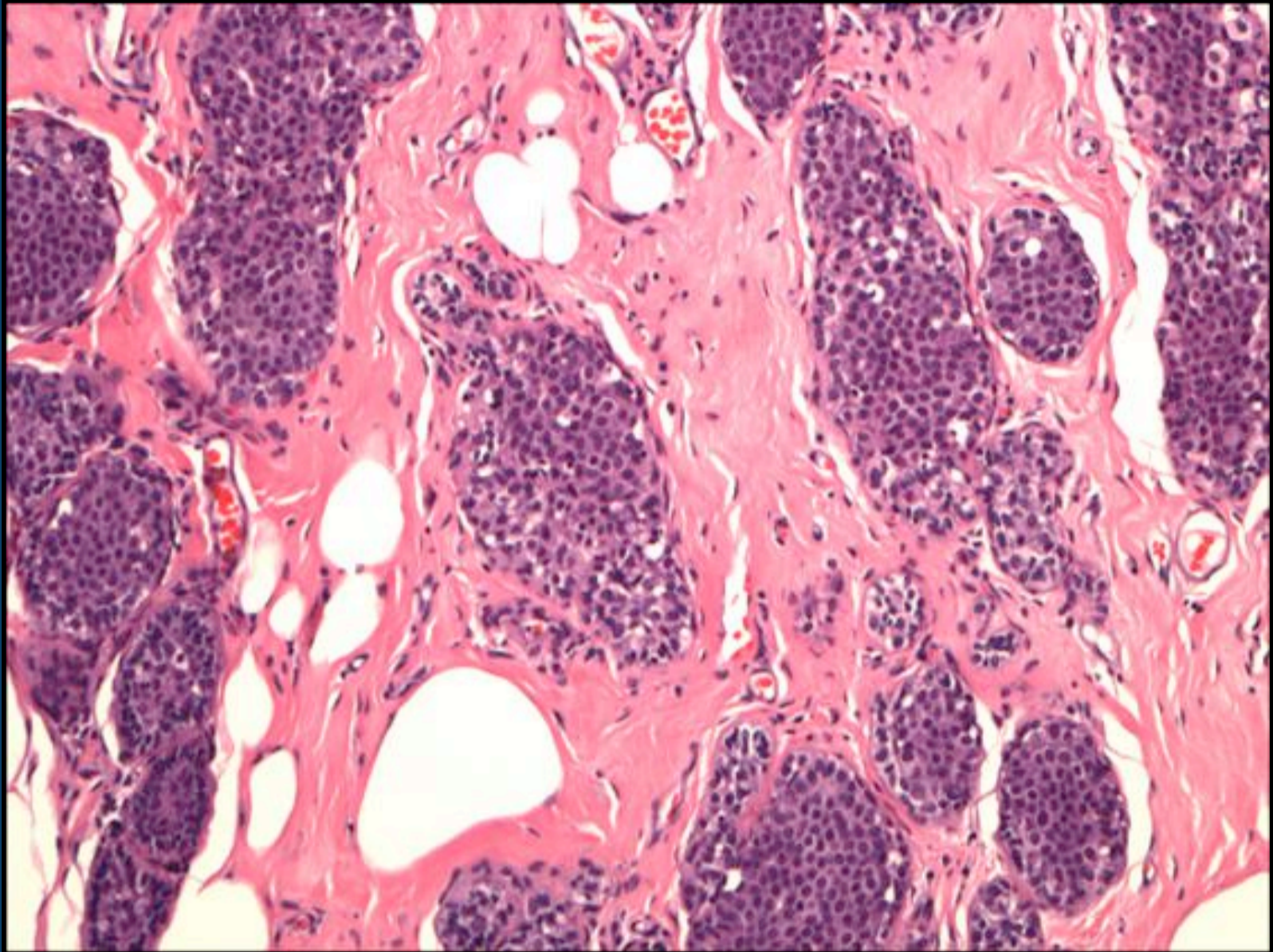


# Major Criteria for Diagnosis of Lobular Carcinoma in Situ

Nuclei	Cells	Pattern
Round Monotonous Hyperchromatic	Round-cuboidal or polygonal  Evenly spaced	One half of acini in lobular unit completely filled, distorted, <i>and</i> distended with characteristic cells

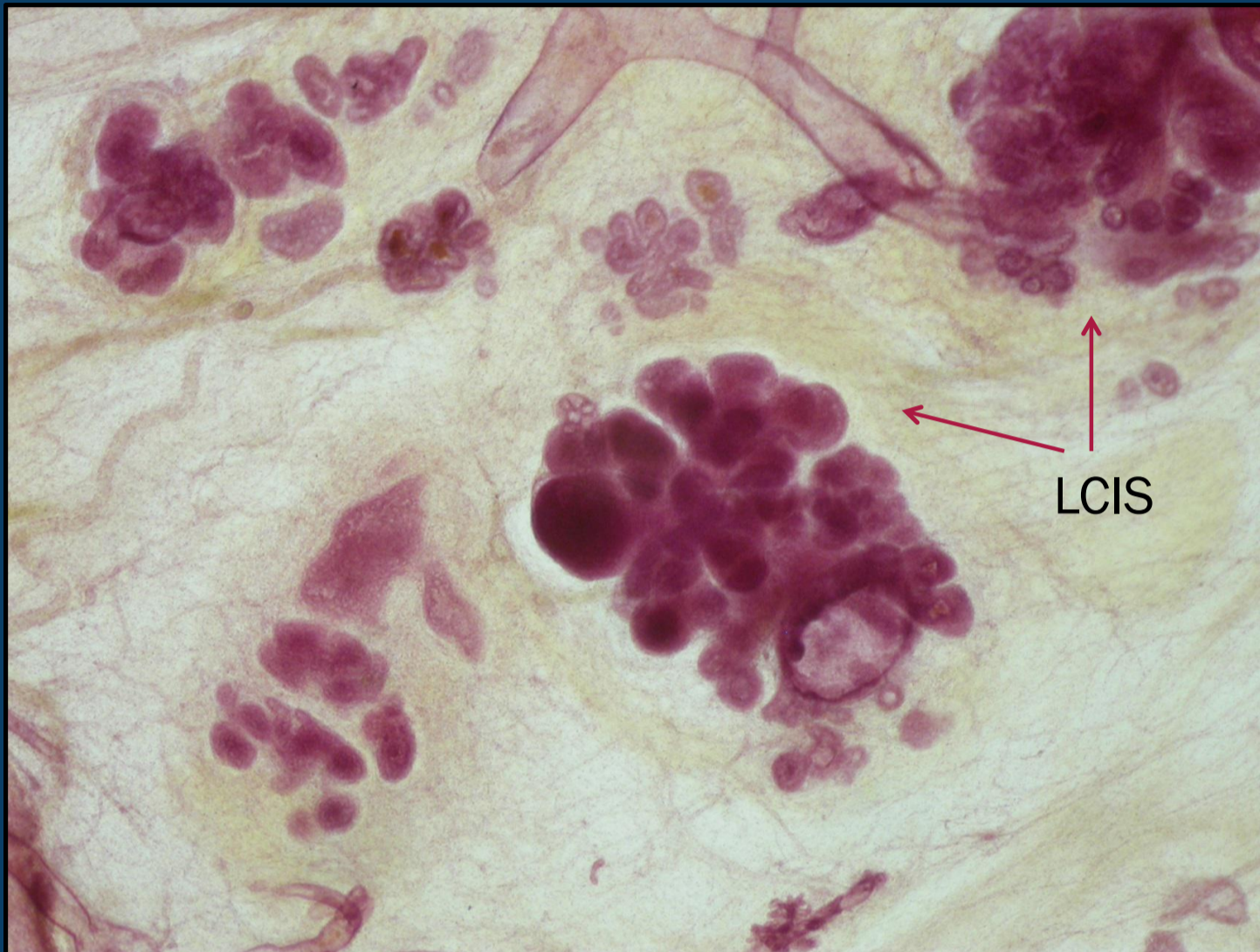
Page DL, et al. Cancer. 1985; 55: 2698-2708

# Major Criteria for Diagnosis of Lobular Carcinoma in Situ



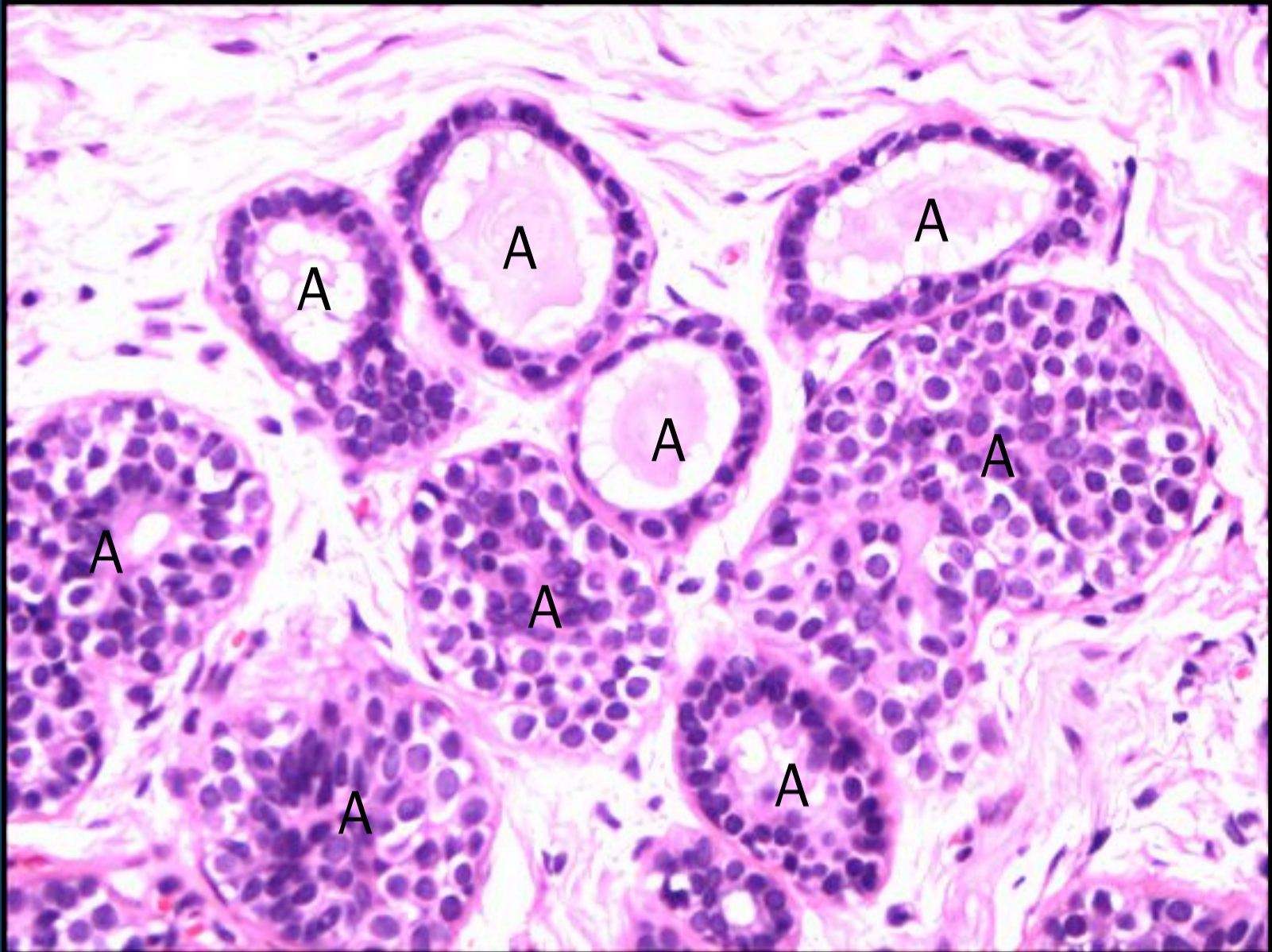
ALL ACINI COMPLETELY FILLED AND EXPANDED: **LCIS**

# Major Criteria for Diagnosis of Lobular Carcinoma in Situ



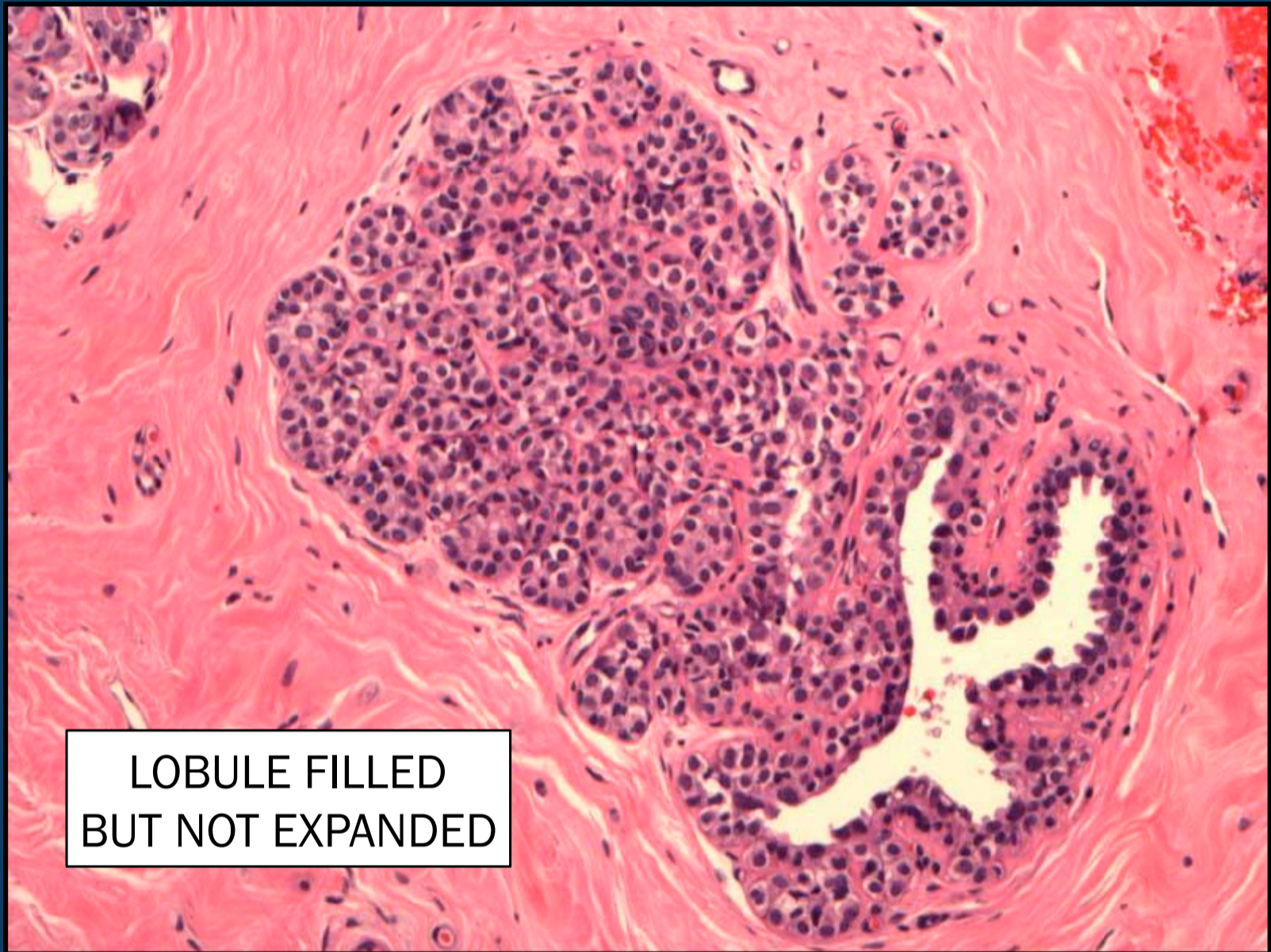
IMAGES BY DR. LASZLO TABAF

## Definition of “Atypical Lesions”



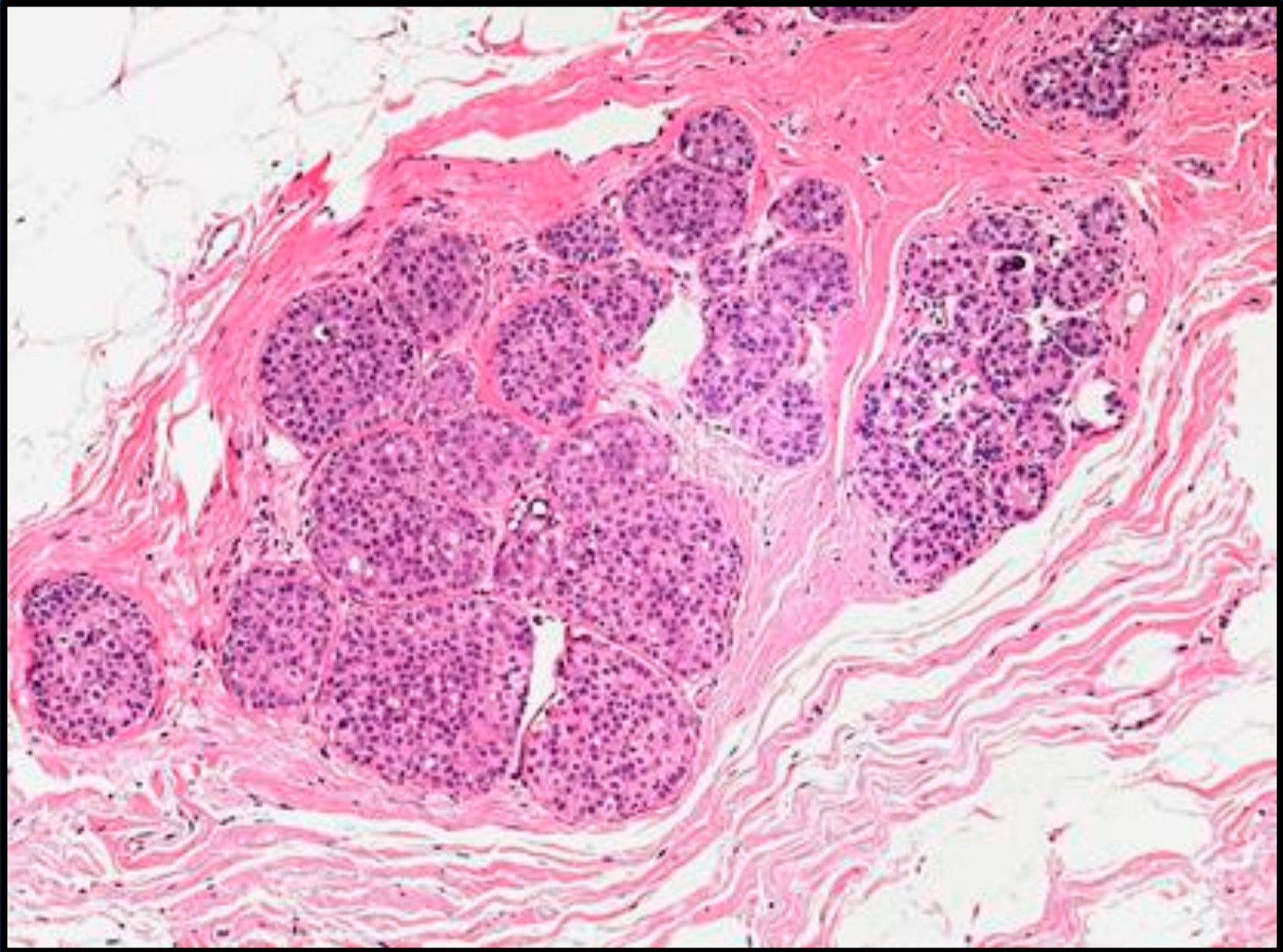
SOME ACINI EXPANDED, SOME NORMAL.  
IF MORE THAN 50% OF ACINI ARE EXPANDED=LCIS

## Definition of “Atypical Lesions”



### ATYPICAL LOBULAR HYPERPLASIA

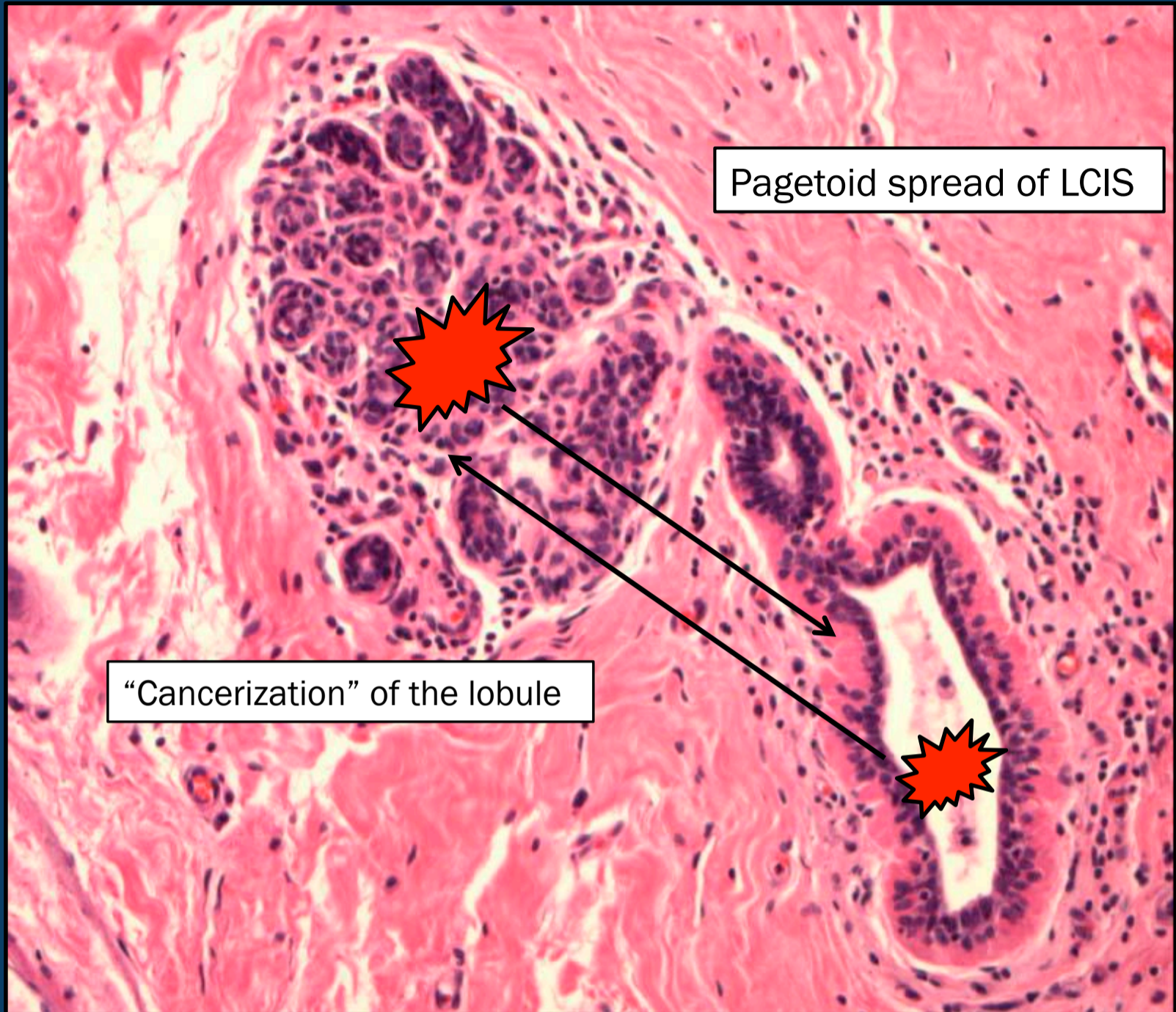
## Definition of “Atypical Lesions”



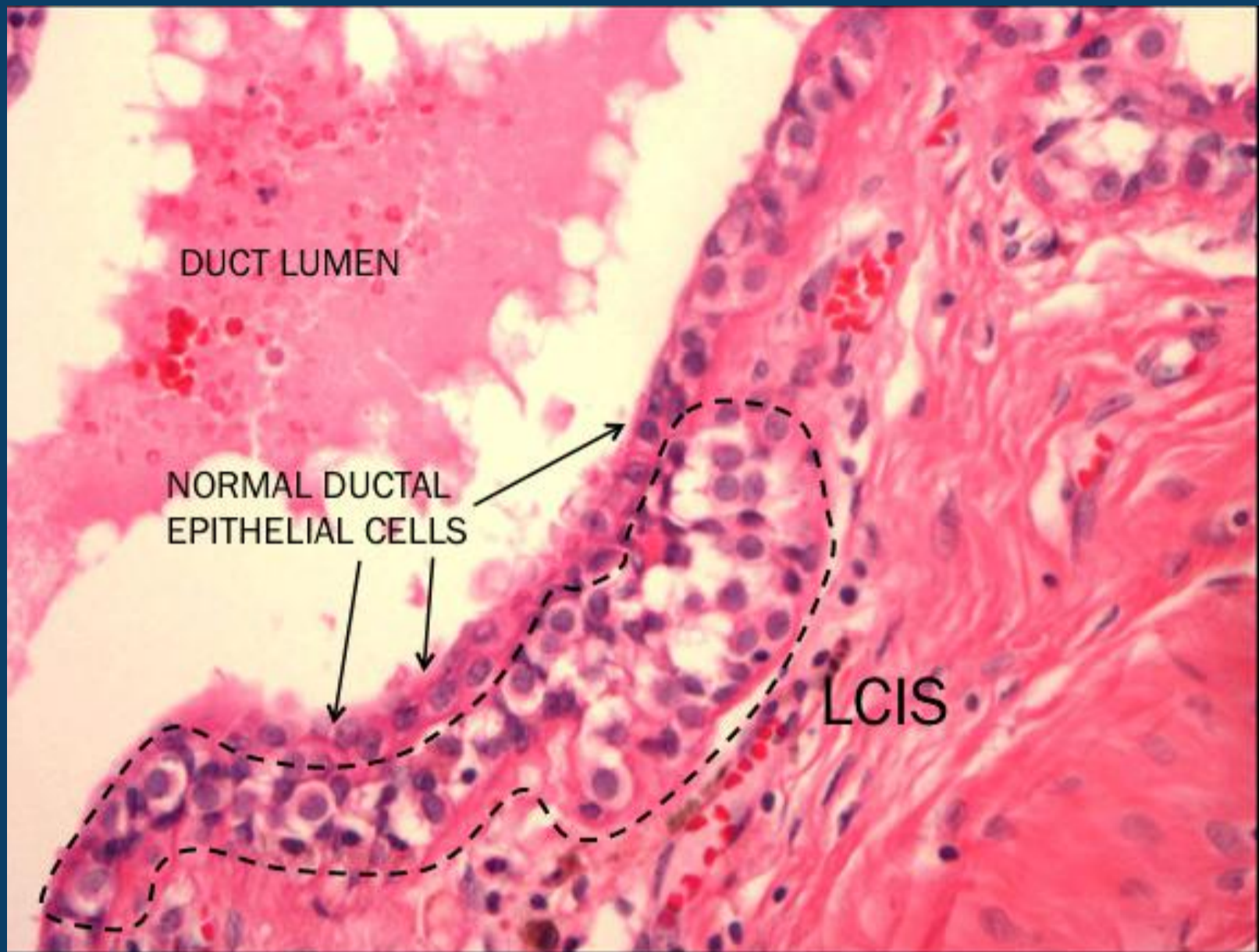
### CO-EXISTING LCIS (LEFT) AND ALH (RIGHT)

O'Malley FP, et al. Modern Pathology 2010;23:S14-S25

# Definition of "Atypical Lesions"

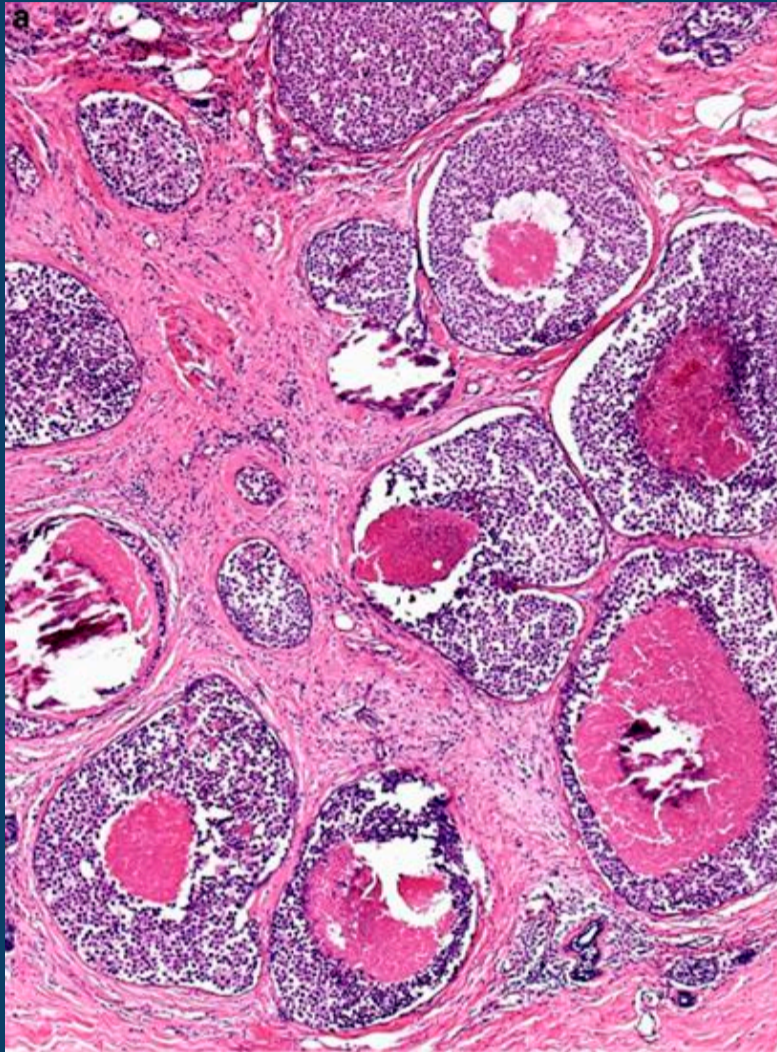


## Definition of “Atypical Lesions”

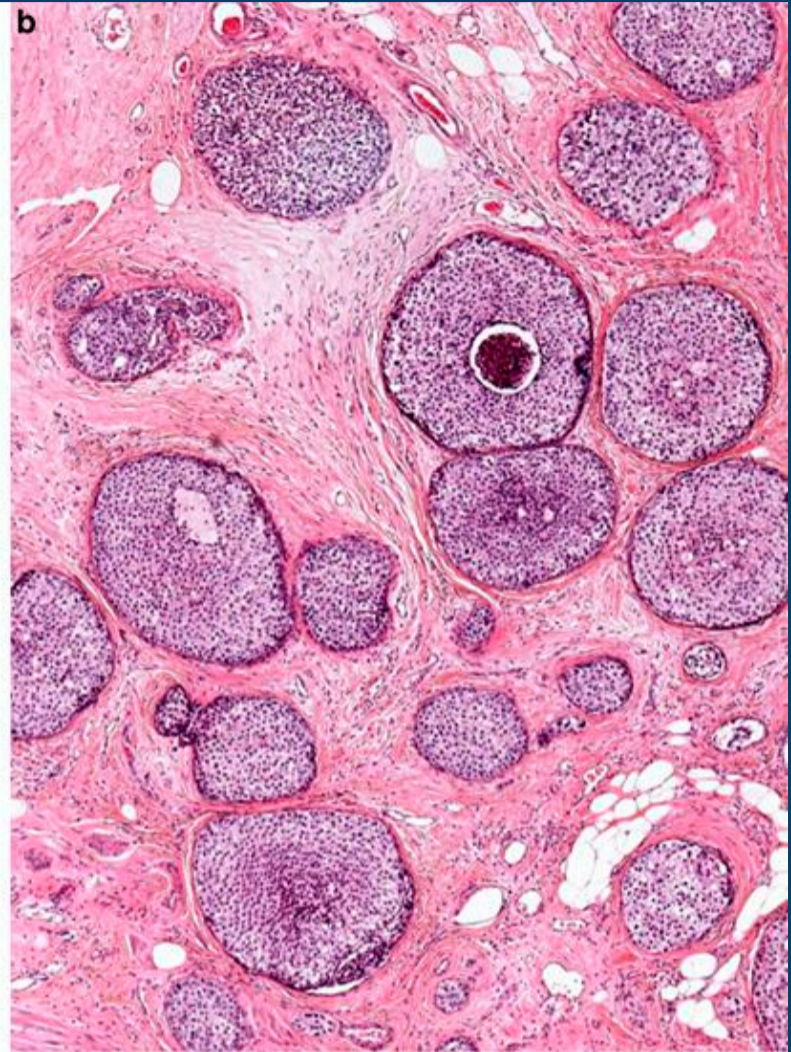


### ***PAGETOID SPREAD* OF LCIS INTO TERMINAL DUCTS**

# Definition of “Atypical Lesions”



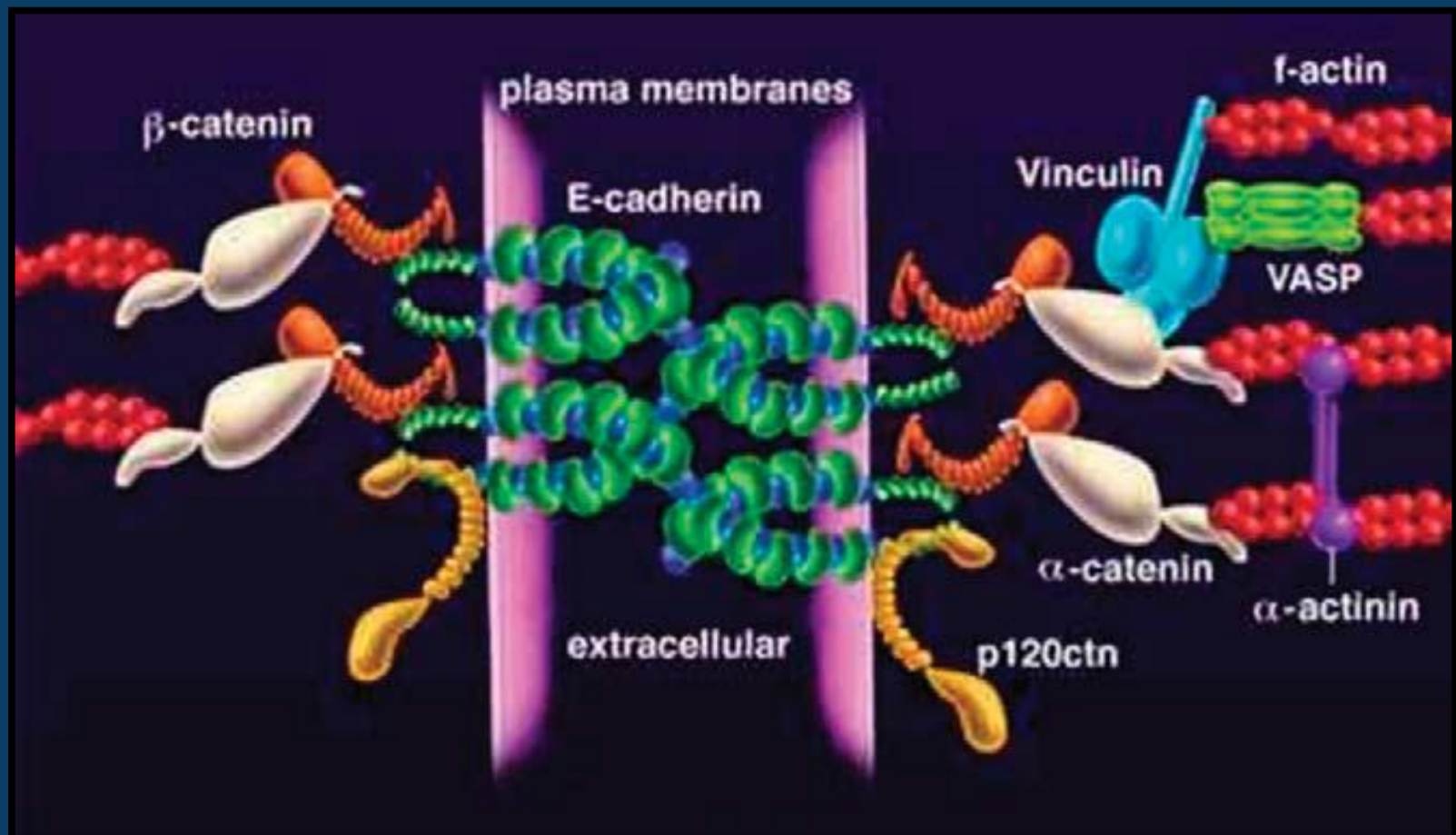
LCIS WITH CENTRAL NECROSIS



DCIS WITH CENTRAL NECROSIS

O'Malley FP, et al. Modern Pathology 2010;23:S14-S25

# E-CADHERIN



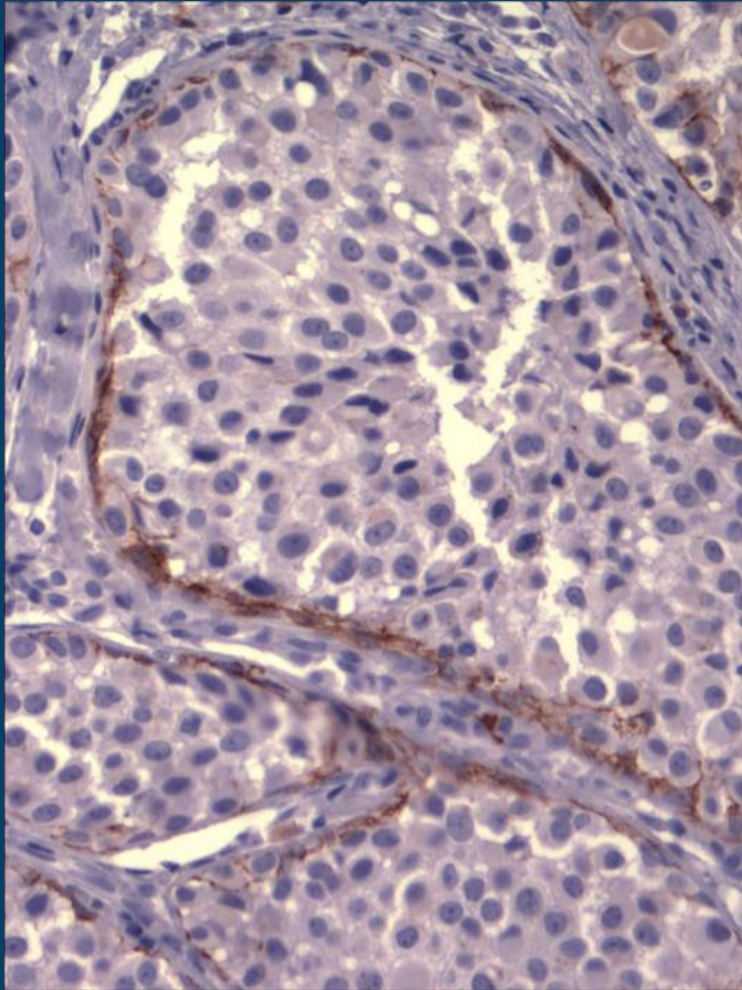
VIRTUALLY ALL LOBULAR LESIONS LACK NORMALLY ACTIVE E-CADHERIN ON THEIR CELL SURFACES

Hwang, H et al. Diagnostic Histopathology 2010;16:7, pp337-342

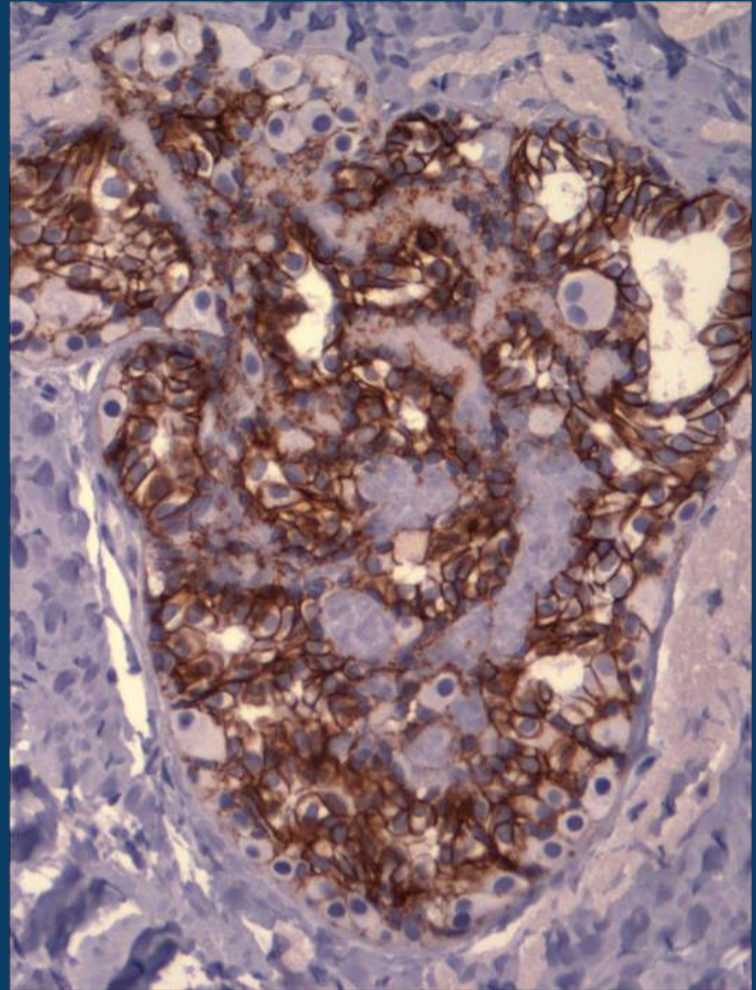
# E-CADHERIN

---

LCIS



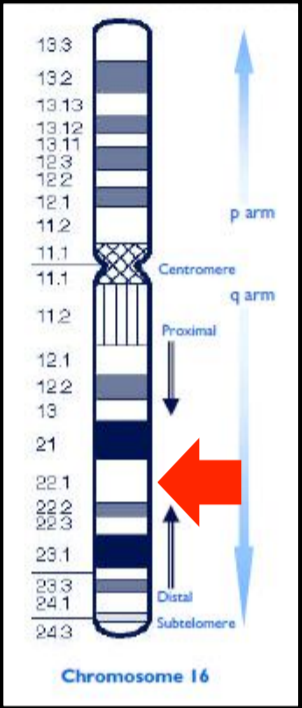
DCIS



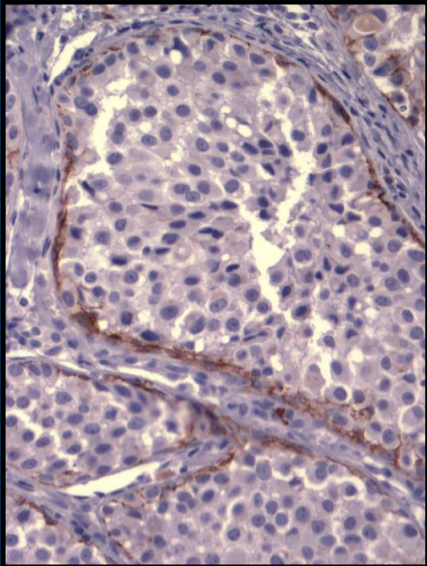
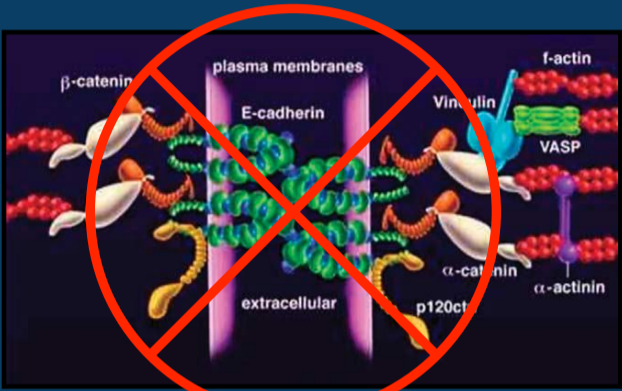
E-CADHERIN STAIN

# E-CADHERIN

GENETIC DEFECT



DEFECTIVE OR ABSENT PROTEIN



UNIQUE MORPHOLOGIC GROWTH FEATURES

